

**Accessories**

**Lamp shade**

Part No. GM00002377  
Model: ML009G  
Part No. GM00002358  
Model: ML005G



photo: ML009G

- Provides widespread illumination and reduces the glare of LED light.
- Reduces multiple shadows.

**Anti-glare film**

Part No. GM00002376  
Model: ML009G  
Part No. GM00002359  
Model: ML005G  
Part No. GM00002312  
Model: ML003G

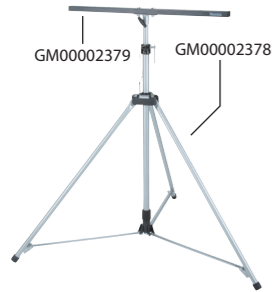


photo: ML005G

When the light source is glaring, attach this film to the lens surface of the light to reduce the glare.

**Tripod**

Part No. GM00002073  
Model: ML005G / ML003G



**Tripod**

Part No. GM00002378  
Model: ML009G / ML005G / ML003G



photo: ML005G

**Vise**

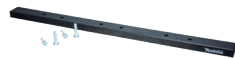
Part No. GM00001396  
Model: ML009G / ML005G / ML003G



photo: ML009G

**Flat bar**

Part No. GM00002379  
Model: ML005G / ML003G



**Continuous run time (approx): hour**

On a single full battery charge

Model	ML009G			
	High	Medium	Low	
<b>40Vmax</b>	BL4020 x2	1.3 h	3.5 h	7.5 h
	BL4025 x2	1.5 h	4.0 h	8.5 h
	BL4040 x2	2.4 h	6.5 h	14 h
	BL4050F x2	3.0 h	8.0 h	17 h
<b>18V</b>	BL1815N x2	0.4 h	1.3 h	2.7 h
	BL1820B x2	0.6 h	1.7 h	3.0 h
	BL1830B x2	0.8 h	2.4 h	4.5 h
	BL1840B x2	1.1 h	3.0 h	6.5 h
	BL1850B x2	1.5 h	4.0 h	8.5 h
BL1860B x2	1.8 h	5.0 h	10 h	

Model	ML005G			ML003G	
	High	Medium	Low	High	Low
<b>40Vmax</b>	BL4020	1.7 h	3.5 h	7.0 h	-
	BL4025	2.2 h	4.5 h	9.5 h	6.0 h
	BL4040	3.5 h	7.5 h	15 h	10 h
	BL4050F	4.0 h	9.5 h	18 h	13 h
	BL4050F	4.0 h	9.5 h	18 h	13 h
<b>18V</b>	BL1815N	0.7 h	1.5 h	3.0 h	2.0 h
	BL1820B	0.9 h	2.0 h	3.5 h	2.9 h
	BL1830B	1.3 h	2.7 h	5.5 h	4.0 h
	BL1840B	1.8 h	3.5 h	7.5 h	5.5 h
	BL1850B	2.3 h	4.5 h	10 h	7.0 h
	BL1860B	2.7 h	5.5 h	12 h	8.5 h

**Charging Time**

Model	40Vmax DC40RA / DC40RC		18V LXT DC18RC / DC18SD	
	Fast Charging	Standard	Fast Charging	Standard
BL4020 2.0Ah	22 min	30 min	15 min	30 min
BL4025 2.5Ah	28 min	38 min	24 min	45 min
BL4040 4.0Ah	45 min	67 min	22 min	60 min
BL4050F 5.0Ah	50 min	85 min	36 min	90 min
BL4080F 8.0Ah	76 min	170 min	45 min	110 min
			55 min	130 min

**Cordless Worklight**

**ML009G / ML005G / ML003G**

	ML009G	ML005G	ML003G
Run Time (hrs)	w/ BL4040 x2, Low/Mid/High: 14 / 6.5 / 2.4	w/ BL4040, Low / Mid / High: 15 / 7.5 / 3.5	w/ BL4040, Low / High: 22 / 10
Illuminance (High / Mid / Low)	at 1 m from the light source: 4,300 / 1,900 / 1,000 lx	at 1 m from the light source: 2,100 / 1,000 / 500 lx	at 1 m from the light source: 500 / 200 lx
Luminous Flux	High / Mid / Low: 10,000 / 4,000 / 2,000 lm	High / Mid / Low: 3,600 / 1,800 / 900 lm	High / Low: 1,100 / 450 lm
Lighting Coverage	Front / Sides: 9.7 / 11.4 m	Front / Sides: 6.0 / 6.4 m	Front / Sides: 2.8 / 3.0 m
Dimensions (L x W x H)	w/ Handle in Retracted Position: 248 x 386 x 305 mm (9-3/4 x 15-1/4 x 12") w/ Handle in Upright Position: 248 x 386 x 430 mm (9-3/4 x 15-1/4 x 17")	w/ Handle in Retracted Position: 248 x 309 x 296 mm (9-3/4 x 12-1/8 x 11-5/8") w/ Handle in Upright Position: 248 x 309 x 423 mm (9-3/4 x 12-1/8 x 16-5/8")	w/ Handle in Retracted Position: 249 x 298 x 280 mm (9-3/4 x 11-3/4 x 11") w/ Handle in Upright Position: 249 x 298 x 386 mm (9-3/4 x 11-3/4 x 15-1/4")
Net weight	6.4 - 9.9 kg (14.1 - 21.8 lbs.)	4.9 - 6.5 kg (10.8 - 14.3 lbs.)	3.7 - 4.7 kg (8.2 - 10.4 lbs.)

Standard Equipment : Anti-glare film

The weight does not include battery cartridge  
Items of standard equipment and specifications may vary by country or area.

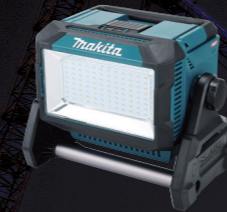
**Makita Corporation**

3-11-8 Sumiyoshi-cho, Anjo, Aichi, 446-8502 Japan

PRINTED IN JAPAN 202208

**Cordless Worklight Line up**

ML009G



Luminous Flux  
max  
**10,000 lm**

ML005G



Luminous Flux  
max  
**3,600 lm**

ML003G



Luminous Flux  
max  
**1,100 lm**



Powered by:  
• 40Vmax XGT Li-Ion battery  
• 18V LXT Li-Ion battery  
(two in parallel or one)



XGT  
40V LITHIUM-ION  
max

18V  
LITHIUM-ION



ML009G



ML005G

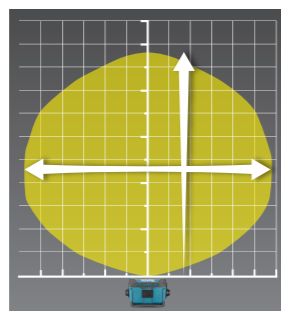


ML003G

**ML009G**



Distance



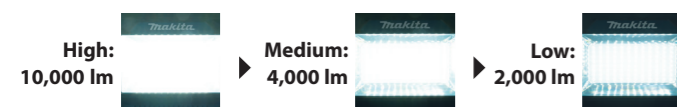
Luminous Flux  
max  
**10,000 lm**

IP65 certified  
dust and  
water  
resistance

Front: about **9.7 m**  
Side: about **11.4 m**

**3 brightness settings**

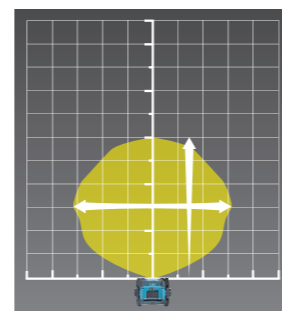
with memory function that remembers the brightness setting last time you power off.



**ML005G**



Distance



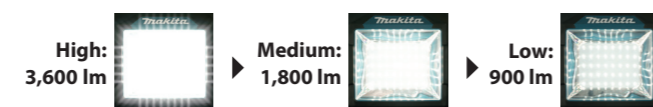
Luminous Flux  
max  
**3,600 lm**

IP65 certified  
dust and  
water  
resistance

Front: about **6 m**  
Side: about **6.4 m**

**3 brightness settings**

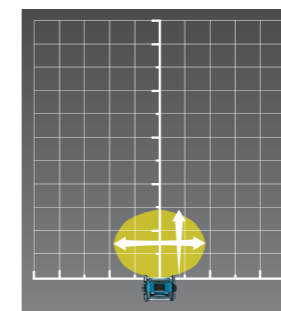
with memory function that remembers the brightness setting last time you power off.



**ML003G**



Distance



Luminous Flux  
max  
**1,100 lm**

IP65 certified  
dust and  
water  
resistance

Front: about **2.8 m**  
Side: about **3 m**

**2 brightness settings**

with memory function that remembers the brightness setting last time you power off.



**Battery capacity warning function**



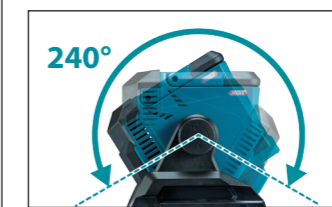
Automatically notifies the user about a decrease in battery capacity with a reduction in illuminance.

**Carrying handle**



Compact design with a short height thanks to the retractable carrying handle

**Angle adjustment**

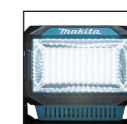


Knob for free adjustment of light angle enables the light source to rotate from -30° to 210° to a desired angle.

**Switch**



**LED light color: daylight white**



Color temperature:  
5,000 K