



| | |
|----|----------|
| TH | THAILAND |
|----|----------|

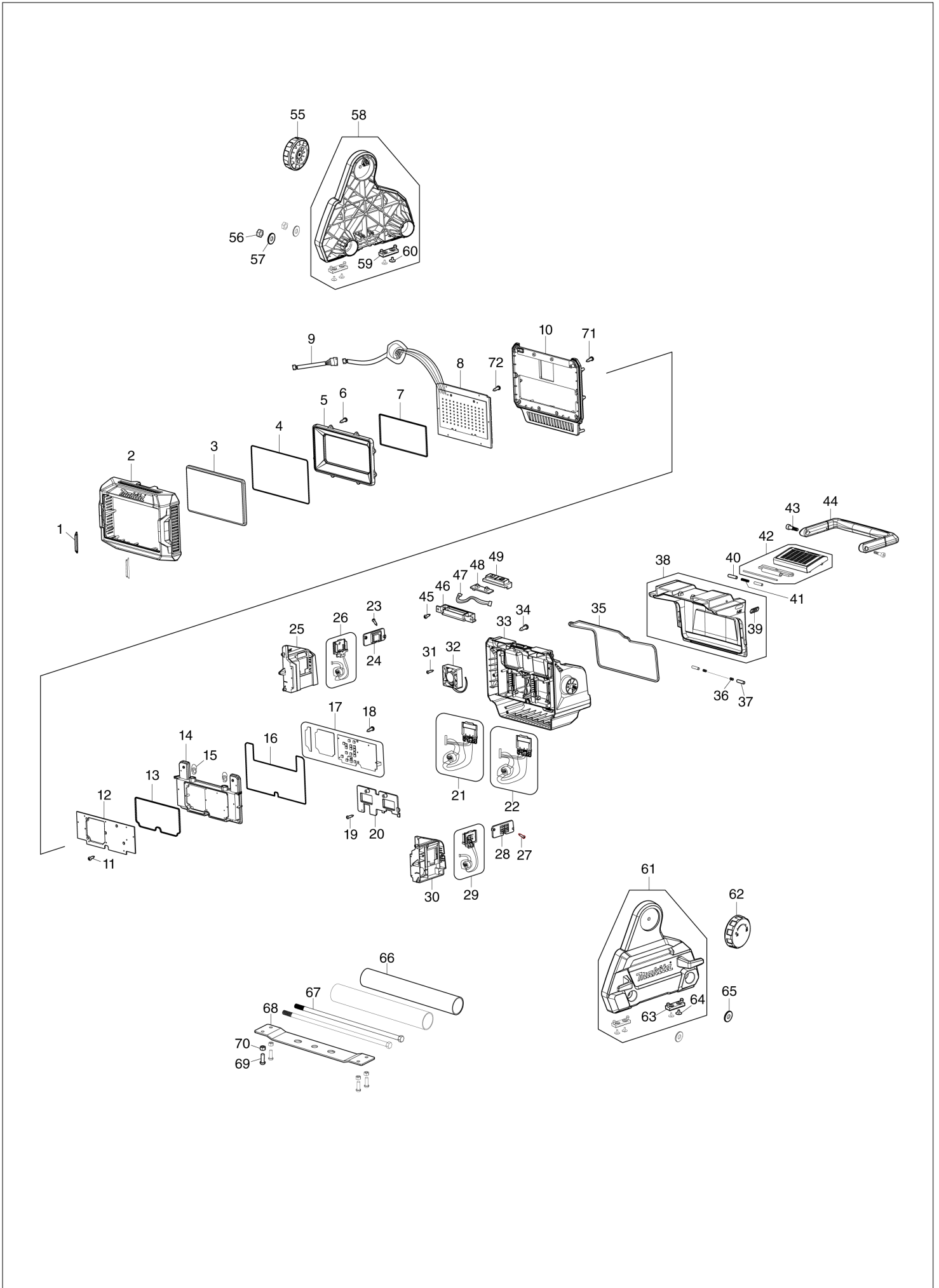
Diagram / Parts List

ML009G

CORDLESS WORKLIGHT



(TH) ML009G / CORDLESS WORKLIGHT



| | |
|----|----------|
| TH | THAILAND |
|----|----------|

ML009G / CORDLESS WORKLIGHT

| Item | Sub | Parts No. | Parts Description | Qty | I/C | E/C No. | Close No. | Remark |
|-------|-----|------------|-----------------------------|-----|-----|---------|-----------|--------|
| 001 | | GM00002450 | FRONT COVER PLATE | 2 | | | | |
| 002 | | GM00002418 | FRONT COVER ASSY | 1 | | | | |
| 003 | | GM00002419 | LENS ASSY | 1 | | | | |
| 004 | | GM00002420 | O-RING | 1 | | | | |
| 005 | | GM00002421 | REFLECTOR ASSY | 1 | | | | |
| 006 | | GM00001333 | SCREW 3 X 12PB B0130120702 | 8 | | | | |
| 007 | | GM00002422 | O-RING | 1 | | | | |
| 008 | | GM00002423 | LED PCBA ASSY | 1 | | | | |
| 009 | | GM00002451 | LEAD UNIT ASSY | 1 | | | | |
| 010 | | GM00002424 | MID-BODY COVER | 1 | | | | |
| 011 | | GM00002165 | SCREW 3X18 PT | 16 | | | | |
| 012 | | GM00002425 | HEAT SINK | 1 | | | | |
| 013 | | GM00002426 | O-RING | 1 | | | | |
| 014 | | GM00002427 | POWER CASE | 1 | | | | |
| 015 | | GM00002320 | EVA | 2 | | | | |
| 016 | | GM00002428 | O-RING | 1 | | | | |
| 017 | | GM00002455 | MAIN PCBA ASSY | 1 | | | Y09016 | |
| 017-1 | | GM00002495 | MAIN PCBA ASSY | 1 | < | Y09016 | | |
| 018 | | GM00001332 | SCREW 3 X 8 PB | 5 | | | | |
| 019 | | GM00002165 | SCREW 3X18 PT | 9 | | | | |
| 020 | | GM00002430 | TERMINAL HOLDING PLATE ASSY | 1 | | | | |
| 021 | | GM00002435 | XGT TERMINAL ASSY | 1 | | | | |
| 022 | | GM00002436 | XGT TERMINAL ASSY | 1 | | | | |
| 023 | | GM00002165 | SCREW 3X18 PT | 2 | | | | |
| 024 | | GM00002438 | TERMINAL HOLDING ASSY | 1 | | | | |
| 025 | | GM00002437 | BATTERY SUPPORT | 1 | | | | |
| 026 | | GM00002433 | LXT TERMINAL ASSY | 1 | | | | |
| 027 | | GM00002165 | SCREW 3X18 PT | 2 | | | | |
| 028 | | GM00002434 | TERMINAL HOLDING ASSY | 1 | | | | |
| 029 | | GM00002432 | LXT TERMINAL ASSY | 1 | | | | |
| 030 | | GM00002431 | BATTERY SUPPORT | 1 | | | | |
| 031 | | GM00002193 | SCREW 4X30 PA | 4 | | | | |
| 032 | | GM00002194 | COOLING FAN | 1 | | | | |
| 033 | | GM00002456 | MID-BODY ASSY | 1 | | | | |
| 034 | | GM00002165 | SCREW 3X18 PT | 13 | | | | |
| 035 | | GM00002440 | O-RING | 1 | | | | |
| 036 | | GM00002441 | SPRING | 2 | | | | |
| 037 | | GM00002403 | SHAFT | 2 | | | | |
| 038 | | GM00002442 | BATTERY LOCK COVER ASSY | 1 | | | | |
| | D10 | | INC. 39 | | | | | |
| 039 | | GM00002310 | XGT LABEL | 1 | | | | |
| 040 | | GM00002255 | SHAFT A | 2 | | | | |
| 041 | | GM00002309 | SPRING | 1 | | | | |
| 042 | | GM00002443 | LATCH ASSY | 1 | | | | |
| 043 | | GM00002137 | INSIDE-HEX SCREW | 2 | | | | |
| 044 | | GM00002444 | HANDLE ASSY | 1 | | | | |
| 045 | | GM00002165 | SCREW 3X18 PT | 2 | | | | |
| 046 | | GM00002445 | SWITCH HOLDER | 1 | | | | |
| 047 | | GM00002446 | LEAD UNIT ASSY | 1 | | | | |
| 048 | | GM00002182 | SWITCH PCBA ASSY | 1 | | | | |
| 049 | | GM00002141 | SWITCH ASSY | 1 | | | | |
| 055 | | GM00002160 | LATCH KNOB ASSY | 1 | | | | |
| 056 | | GM00002158 | NUT M8 | 2 | | | | |
| 057 | | GM00002157 | METAL OD20XID8.5X2MM | 2 | | | | |
| 058 | | GM00002413 | STAND-LEFT ASSY | 1 | | | | |
| | D10 | | INC. 59,60 | | | | | |
| 059 | | GM00002154 | RUBBER FOOT | 2 | | | | |
| 060 | | GM00002164 | SCREW 3X6 PWB | 4 | | | | |
| 061 | | GM00002417 | STAND-RIGHT ASSY | 1 | | | | |
| | D10 | | INC. 63,64 | | | | | |
| 062 | | GM00002160 | LATCH KNOB ASSY | 1 | | | | |
| 063 | | GM00002154 | RUBBER FOOT | 2 | | | | |
| 064 | | GM00002164 | SCREW 3X6 PWB | 4 | | | | |
| 065 | | GM00002157 | METAL OD20XID8.5X2MM | 2 | | | | |
| 066 | | GM00002449 | TUBE | 2 | | | | |

A:

Interchange
O : Yes
X : No
< : the new part can be substituted for the current.
> : the current part can be substituted for the new.
S : Interchangeable as a set.

