



Nibbler JN3201 3.2mm (10Ga)

High cutting capacity

Steel up to 400 N/mm² : 3.2mm (10Ga)

Steel up to 600 N/mm² : 2.5mm (13Ga)

Steel up to 800 N/mm² : 1.0mm (20Ga)

Aluminum up to 200 N/mm² : 3.5mm (10Ga)



710W continuous rating input

Low noise level at only 81dB(A)

Ergonomically designed handle with rubberized soft grip

provides comfortable grip and more control while minimizing hand fatigue and pain.

Gauge

The groove on the yoke serves as a thickness gauge for shearing mild or stainless steel plate. If the material fits within the groove, it is shearable.

Steel up to 600 N/mm²: 2.5mm (13Ga)



Steel up to 600 N/mm²: 3.5mm (10Ga)



On-tool storage for hex wrench

Hex wrench can be stored on the model for operator's convenience.

Part standardization

Blade section : same as Nibbler JN3200



Die

Part No. 792292-2



Washer

Part No. 341796-7

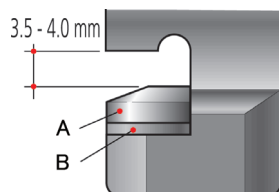
(To keep clearance of 3.5 to 4.0mm, use a washer or two under the die when installing a resharpened die.)

Punch

Part No. 792728-1

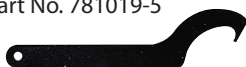


A. Die
B. Washer



Wrench 50

Part No. 781019-5



Nibbler

JN3201 3.2mm (10Ga)

303

Continuous rating Input Capacity	710W Steel up to 400 N/mm ² : 3.2mm (10Ga) Steel up to 600 N/mm ² : 2.5mm (13Ga) Steel up to 800 N/mm ² : 1.0mm (20Ga) Aluminum up to 200 N/mm ² : 3.5mm (10Ga)
Min. cutting radius	Outer edge: 128mm (5-1/16") Inner edge: 120mm (4-3/4")
Strokes per minute (spm)	1,300
Dimensions (L x W x H)	225 x 90 x 254mm (8-7/8" x 3-1/2" x 10")
Net Weight*	3.4kg (7.4lbs)
Power supply cord	2.5m (8.2ft)
Double Insulation	Standard Equipment : Punch, Die, Wrench 50, Hex wrench, Washer

*weight according to EPTA-Procedure 01/2003

Items of standard equipment and specifications may vary by country or area.

Makita Corporation

3-11-8 Sumiyoshi-cho, Anjo, Aichi, 446-8502 Japan

PRINTED IN JAPAN BD-AC