



TH	THAILAND
----	----------

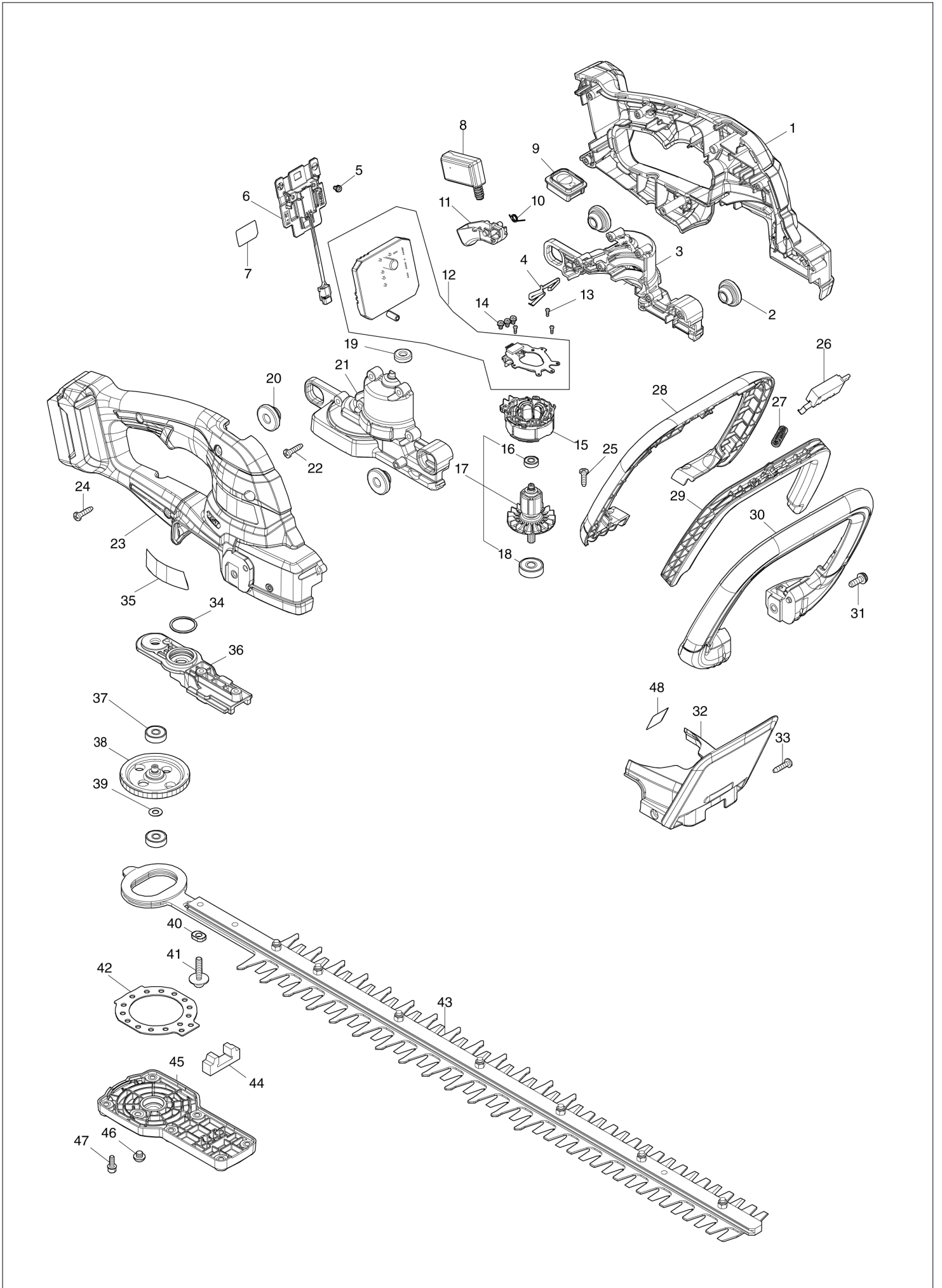
Diagram / Parts List

UH021G

600MM CORDLESS HEDGE TRIMMER



(TH) UH021G / 600MM CORDLESS HEDGE TRIMMER



TH	THAILAND
-----------	-----------------

UH021G / 600MM CORDLESS HEDGE TRIMMER

Item	Sub	Parts No.	Parts Description	Qty	I/C	E/C No.	Close No.	Remark
001		1830R7-8	HANDLE SET	1				
	C10	263005-3	RUBBER PIN 6	2				
	D10		INC. 23					
002		424394-3	RUBBER RING 8	2				
003		1830S8-3	MOTOR HOUSING SET	1				
	D10		INC. 21					
004		654909-4	EARTH PLATE	1				
005		652031-1	PAN HEAD SCREW M3X6	2				
006		632V23-8	TERMINAL UNIT	1				
007		8146T8-2	UH021G SERIAL NO. LABEL	1				
008		632V58-9	SWITCH UNIT	1				
009		141V89-2	SWITCH CIRCUIT COMPLETE E	1				
010		232770-5	TORSION SPRING 6	1				
011		413J41-1	SWITCH LEVER RE	1				
012		620N57-5	CONTROLLER	1				
013		266490-9	TAPPING SCREW PT 2X6	3				
014		652069-6	FLAT HEAD SCREW M3X6	3				
015		629C08-9	STATOR	1				
016		211157-4	BALL BEARING 695ZZ	1				
017		519764-0	ROTOR ASSY	1				
	D10		INC. 16,18					
018		210023-2	BALL BEARING 627DDW	1				
019		424195-9	RUBBER RING 6	1				
020		424394-3	RUBBER RING 8	2				
021		1830S8-3	MOTOR HOUSING SET	1				
	D10		INC. 3					
022		266326-2	TAPPING SCREW 4X18	6				
023		1830R7-8	HANDLE SET	1				
	C10	263005-3	RUBBER PIN 6	2				
	D10		INC. 1					
024		266326-2	TAPPING SCREW 4X18	7				
025		266326-2	TAPPING SCREW 4X18	6				
026		632V59-7	SWITCH UNIT	1				
027		231325-3	COMPRESSION SPRING 6	1				
028		413J39-8	FRONT HANDLE COVER E	1				
029		413J40-3	SWITCH LEVER FE	1				
030		413J38-0	FRONT HANDLE E	1				
031		911223-4	PAN HEAD SCREW M5X16	2				
032		141V87-6	PROTECTOR COMPLETE	1				
033		266326-2	TAPPING SCREW 4X18	2				
034		213961-7	O RING 22	1				
035		8146T7-4	UH021G NAME PLATE	1				
036		137196-5	BEARING HOUSING ASS'Y	1				
	C10	263002-9	RUBBER PIN 4	1				
037		211016-2	BALL BEARING 626LLB	2				
038		141K44-8	GEAR COMPLETE	1				
039		253715-0	FLAT WASHER 6	1				
040		313436-7	SPACER	2				
041		265A89-3	H.S.H.BOLT M5X25 WITH WR	2				
042		347A10-5	PLATE	1				
043		1914G5-5	SHEAR BLADE 600E SET	1				
	C10	199450-5	GREASE VESSEL SET	1				
	C20	313436-7	SPACER	2				
	C30	264013-7	HEX. LOCK NUT M5-8	7				
	C40	257876-8	RING 5	7				
	C50	347990-9	LOWER PLATE	1				
	C60	253571-8	FLAT WASHER 5	4				
	C70	265A40-3	+TRUSS HEAD SCREW M5X20	7				
	C80	327982-4	GUIDE BAR 600E	1				
	C90	347987-8	PLATE 600E	1				
044		422904-0	DUST GUARD	1				
045		413J26-7	UNDER COVER	1				
046		266559-9	H.S.BUTTON HEAD BOLT M6X4	1				
047		922118-6	HEX. SOCKET HEAD BOLT M4X12	6				
A01		413L92-6	BLADE COVER 600	1				

A:UH021GD101(H)
B:UH021GZ(N)

Interchange
O : Yes
X : No
< : the new part can be substituted for the current.
> : the current part can be substituted for the new.
S : Interchangeable as a set.

