



TH	THAILAND
----	----------

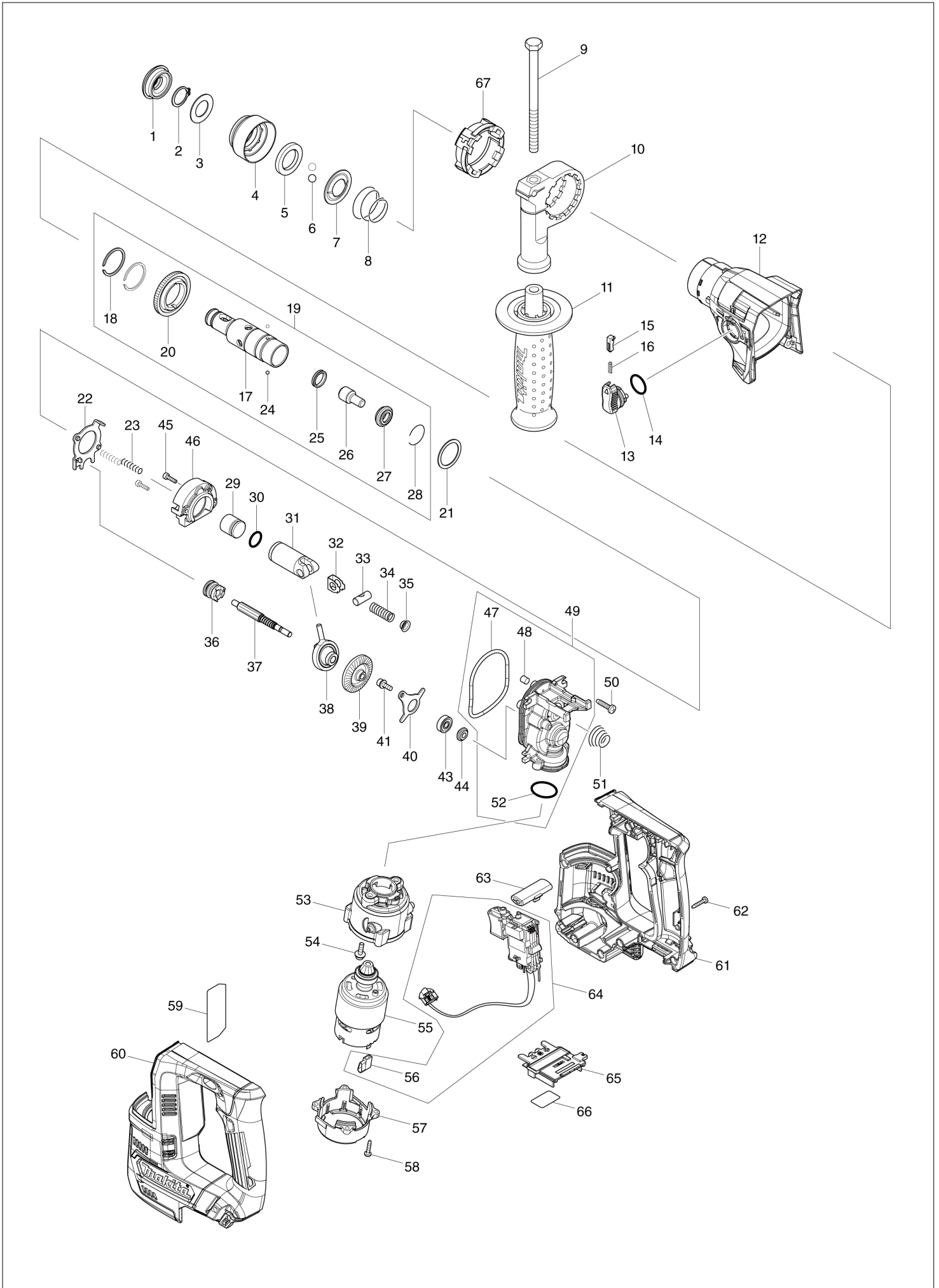
# Diagram / Parts List

HR140D

14MM CORDLESS ROTARY HAMMER



# (TH) HR140D / 14MM CORDLESS ROTARY HAMMER



TH	THAILAND
----	----------

### HR140D / 14MM CORDLESS ROTARY HAMMER

Item	Sub	Parts No.	Parts Description	Qty	I/C	E/C No.	Close No.	Remark
001		286037-3	CAP 34	1				
002		961057-5	RETAINING RING S-17	1				
003		253377-4	FLAT WASHER 17	1				
004		457214-6	CHUCK COVER	1				
005		257416-2	RING 21	1				
006		216022-2	STEEL BALL 7.0	2				
007		346177-0	GUIDE WASHER	1				
008		232347-6	CONICAL COMP. SPRING 21-29	1				
009		921923-8	HEX. BOLT M8X120	1				
010		417911-6	GRIP BASE	1				
011		158057-6	GRIP 36 COMPLETE	1				
	C10	931402-8	HEX. NUT M8	1				
012		144575-0	GEAR HOUSING COMPLETE	1				
	C10	211375-4	BALL BEARING 6805LLB	1				
	C20	213788-5	OIL SEAL 25	1				
013		161569-0	CHANGE LEVER COMPLETE	1				
014		213278-8	O RING 17	1				
015		161568-2	LOCK BUTTON COMPLETE	1				
016		232344-2	COMPRESSION SPRING 3	1				
017		326841-9	TOOL HOLDER	1				
018		961135-1	RETAINING(EXT) WR-25	2				
019		135933-1	TOOL HOLDER ASS'Y	1				
	D10		INC. 17,18,20,21,24-28				Y08078	
	D11		INC. 17,18,20,24-28			Y08078		
020		221483-3	SPUR GEAR 57	1				
021		267175-0	FLAT WASHER 24	1				
022		161570-5	CHANGE PLATE COMPLETE	1				
023		233194-8	COMPRESSION SPRING 4	2				
024		216019-1	STEEL BALL 3	2				
025		213183-9	X RING 13	1				
026		326843-5	IMPACT BOLT	1				
027		326842-7	RING 10	1				
028		232343-4	RING SPRING 23	1				
029		326995-2	STRIKER	1				
030		213128-7	O RING 12	1				
031		319510-9	PISTON CYLINDER	1				
032		347101-6	GUIDE PLATE	1				
033		326846-9	PISTON JOINT	1				
034		232346-8	COMPRESSION SPRING 8	1				
035		347102-4	SPRING GUIDE	1				
036		326845-1	CLUTCH CAM	1				
037		221482-5	SPUR GEAR 8	1				
038		219026-3	SWASH BEARING 6	1			C9175	
038-1		219031-0	SWASH BEARING 6	1	O	C9175		
039		221553-8	SPIRAL BEVEL GEAR 37	1				
040		347100-8	BEARING RETAINER	1				
041		266273-7	HEX. SOCKET HEAD BOLT M4X12	1				
043		210065-6	BALL BEARING 625ZZ	1				
044		326847-7	RING 5	1				
045		265910-0	HEX. SOCKET HEAD BOLT M3X12	2				
046		144219-2	INNER SUPPORT COMPLETE	1				
047		213092-2	O-RING 60	1			C8340	
047-1		213889-9	O-RING 58	1	<	C8340		
048		443138-2	FILTER	1				
049		135926-8	INNER HOUSING ASSEMBLY	1			C8340	
	D10		INC. 47,48,52				C8340	
049-1		136111-6	INNER HOUSING ASSY	1	<	C8340		
	D10		INC. 47,48,52			C8340		
050		265995-6	TAPPING SCREW 4X18	4				
051		232345-0	CONICAL COMP. SPRING 8-19	1				
052		213008-7	O RING 22.4	1				
053		457784-5	MOTOR CASE A	1				
054		251565-7	H. S. HEAD BOLT M4X14	2				
055		629285-5	DC MOTOR	1				
	C10	213162-7	O RING 14	1				

B:HR140DWYJ(H)  
C:HR140DWAJ(H)  
D:HR140DWMJ(H)

Interchange  
O : Yes  
X : No  
< : the new part can be substituted for the current.  
> : the current part can be substituted for the new.  
S : Interchangeable as a set.

