



TH	THAILAND
----	----------

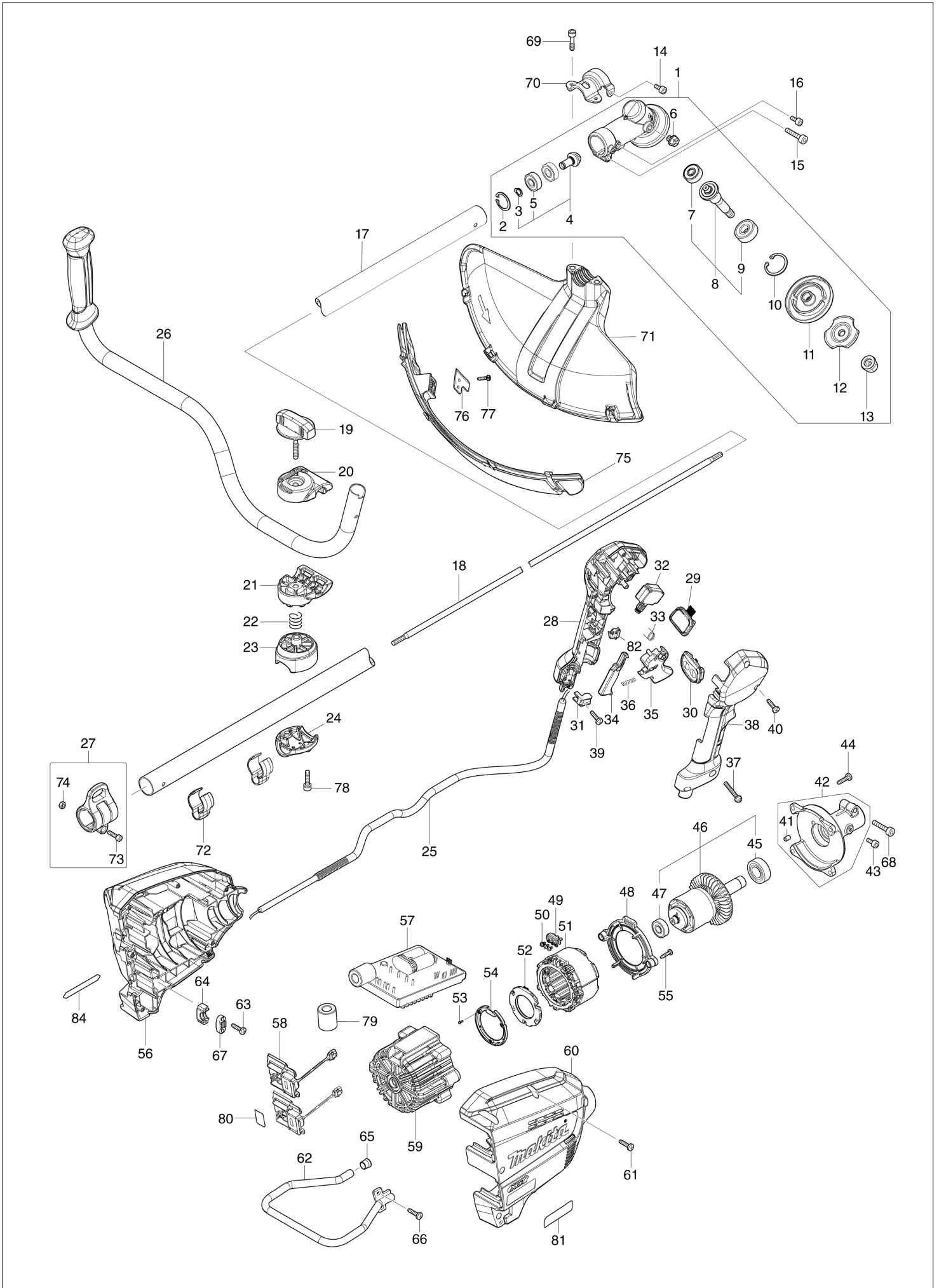
Diagram / Parts List

UR012G

CORDLESS GRASS TRIMMER



(TH) UR012G / CORDLESS GRASS TRIMMER



TH	THAILAND
----	----------

UR012G / CORDLESS GRASS TRIMMER

Item	Sub	Parts No.	Parts Description	Qty	I/C	E/C No.	Close No.	Remark
001		127238-3	GEAR CASE ASSEMBLY G	1				
	D10		INC. 2,4,6,8,10-13					
002		257470-6	RETAINING RING (INT) R-26	1				
003		257471-4	RETAINING RING (EXT) S-10	1				
004		136564-9	SPIRAL BEVEL GEAR 13 ASS'Y	1				
	D10		INC. 3,5					
005		210067-2	BALL BEARING 6000ZZ	2				
006		265590-2	+HEX.BOLT M8X10 WITH R	1				
007		210084-2	BALL BEARING 629ZZ	1				
008		136565-7	CUTTER SHAFT G ASS'Y	1				
	D10		INC. 7,9					
009		211137-0	BALL BEARING 6201LLU	1				
010		257469-1	RETAINING RING (INT) R-32	1				
011		140J59-6	RECEIVE WASHER COMPLETE G	1				
012		162567-7	CLAMP WASHER COMPLETE G	1				
013		252236-9	HEX. LOCK NUT M10-17	1				
014		922211-6	H.S.H.BOLT M5X12 WITH W	1				
015		922353-6	HEX.SOCKET HEAD BOLT M6X30	1				
016		922211-6	H.S.H.BOLT M5X12 WITH W	1				
017		141D74-7	SHAFT PIPE COMPLETE A	1				
	C10	819312-8	MAKITA LOGO LABEL	1				
	C20	8040V7-0	CAUTION LABEL	1				
018		327845-4	SHAFT	1				
019		168796-0	KNOB 57	1				
020		144313-0	UPPER HANDLE HOLDER COMPLETE	1				
	C10	263005-3	RUBBER PIN 6	1				
021		319517-5	LOWER HANDLE HOLDER	1				
022		233309-7	COMPRESSION SPRING 17	1				
023		319799-9	PIPE HOLDER	1				
024		318422-3	PIPE CLAMP	1				
025		699170-6	POWER SUPPLY CORD UNIT	1				
026		140J61-9	HANDLE 22 COMPLETE	1				
	C10	273014-4	GRIP 36	1				
027		125558-9	HANGER ASSEMBLY	1				
	D10		INC. 73,74					
028		183T68-2	GRIP SET	1				
	C10	252180-0	HEX. LOCK NUT M5-8	1				
	D10		INC. 38					
029		141D26-8	INDICATION CIRCUIT COMPLETE G	1				
030		140W06-5	SWITCH CIRCUIT COMPLETE G	1				
	C10	819J26-9	SWITCH LABEL	1				
031		687260-7	STRAIN RELIEF	1				
032		651492-2	SWITCH C3JR-1A-PAXD3	1				
033		233540-5	TORSION SPRING 11	1				
034		459146-3	LOCK OFF LEVER	1				
035		459145-5	SWITCH LEVER	1				
036		233101-1	COMPRESSION SPRING 4	1				
037		911258-5	PAN HEAD SCREW M5X35	1				
038		183T68-2	GRIP SET	1				
	C10	252180-0	HEX. LOCK NUT M5-8	1				
	D10		INC. 28					
039		266326-2	TAPPING SCREW 4X18	1				
040		266326-2	TAPPING SCREW 4X18	5				
041		263005-3	RUBBER PIN 6	1				
042		136465-1	PIPE BRACKET ASSEMBLY	1				
	D10		INC. 41					
043		922211-6	H.S.H.BOLT M5X12 WITH W	1				
044		266420-0	TAPPING SCREW 5X20	4				
045		211275-8	BALL BEARING 6003DDW	1				
046		519560-6	ROTOR ASS'Y	1				DE749
	D10		IMC. 45,47					DE749
046-1		519560-6	ROTOR ASS'Y	1	O	DE749		
	D10		IMC. 45,47			DE749		
047		210059-1	BALL BEARING 6000DDW	1				
048		459144-7	BAFFLE PLATE	1				

Interchange
O : Yes
X : No
< : the new part can be substituted for the current.
> : the current part can be substituted for the new.
S : Interchangeable as a set.

TH	THAILAND
-----------	-----------------

UR012G / CORDLESS GRASS TRIMMER

Item	Sub	Parts No.	Parts Description	Qty	I/C	E/C No.	Close No.	Remark
049		632T09-0	LEAD UNIT	1				
050		652031-1	PAN HEAD SCREW M3X6	3				
051		629A82-5	STATOR	1				
052		620F36-5	CONTROLLER B	1				
053		266490-9	TAPPING SCREW PT 2X6	3				
054		687B69-9	STOPPER	1				
055		266326-2	TAPPING SCREW 4X18	2				
056		183T69-0	HOUSING SET	1				
	C10	263005-3	RUBBER PIN 6	4				
	D10		INC. 60					
057		620F35-7	CONTROLLER	1				
058		632P49-4	TERMINAL UNIT	2				
059		459143-9	MOTOR HOUSING	1				
060		183T69-0	HOUSING SET	1				
	C10	263005-3	RUBBER PIN 6	4				
	D10		INC. 56					
061		266326-2	TAPPING SCREW 4X18	6				
062		347846-6	BATTERY GUARD	1				
063		266326-2	TAPPING SCREW 4X18	2				
064		687051-6	STRAIN RELIEF	1				
065		422230-7	CAP	1				
066		266420-0	TAPPING SCREW 5X20	2				
067		687052-4	STRAIN RELIEF	1				
068		922353-6	HEX. SOCKET HEAD BOLT M6X30	1				
069		266280-0	HEX. SOCKET HEAD BOLT M6X25	2				
070		347494-1	PROTECTOR CLAMP28	1				
071		459147-1	PROTECTOR 480	1				
072		455588-9	WIRE CLAMP	2				
073		266698-5	HEX. SOCKET HEAD BOLT M5X20	1				
074		264086-0	HEX. NUT M5	1				
075		141D72-1	PROTECTOR EXT. 480 COMPLETE	1				
076		347493-3	CUTTER	1				
077		266326-2	TAPPING SCREW 4X18	2				
078		922341-3	HEX. SOCKET HEAD BOLT M6X25	2				
079		688140-0	LINE FILTER	1				
080		811X20-1	UR012G SERIAL NO. LABEL	1				
081		811X12-0	UR012G NAME PLATE	1				
082		632G61-0	SWITCH UNIT	1				
084		8040V4-6	XGT LOGO LABEL	1				
A01		122A37-4	BAND ASSEMBLY	1				
A02		195246-2	SAFETY GOGGLE	1				
A03		195624-6	CUTTER BLADE 305 SET	1				
A05		782238-6	BOX WRENCH 17	1				
A06		783202-0	HEX. WRENCH 4	1				
A07		783217-7	HEX. WRENCH 5	1				
A08		831304-7	ACCESSORY BAG	1				
A09		199884-2	TRIMMER HEAD 105-M10L SET MG	1				
A10		199868-0	PLASTIC BLADE 305 SET MG	1				
	C10	140J62-7	BLADE BASE COMPLETE	1				
	C20	326958-8	HOLDER M10L	1				
	C30	459154-4	BLADE BASE COVER	1				
	C40	199870-3	PLASTIC BLADE 305 BLADE SET MG	1				
A11		422818-3	BLADE COVER	2				

Interchange
O : Yes
X : No
< : the new part can be substituted for the current.
> : the current part can be substituted for the new.
S : Interchangeable as a set.