



TH	THAILAND
----	----------

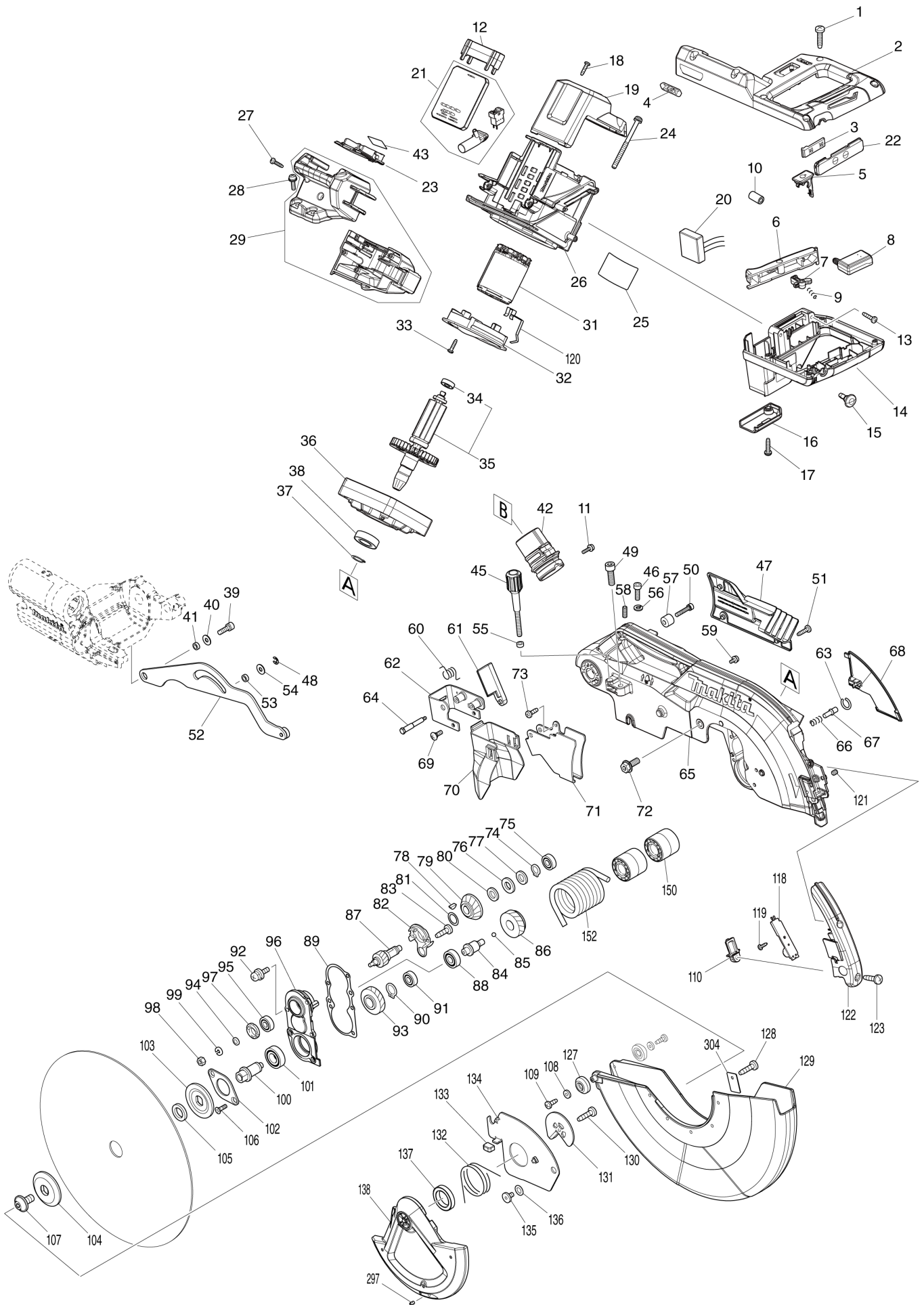
Diagram / Parts List

LS003G

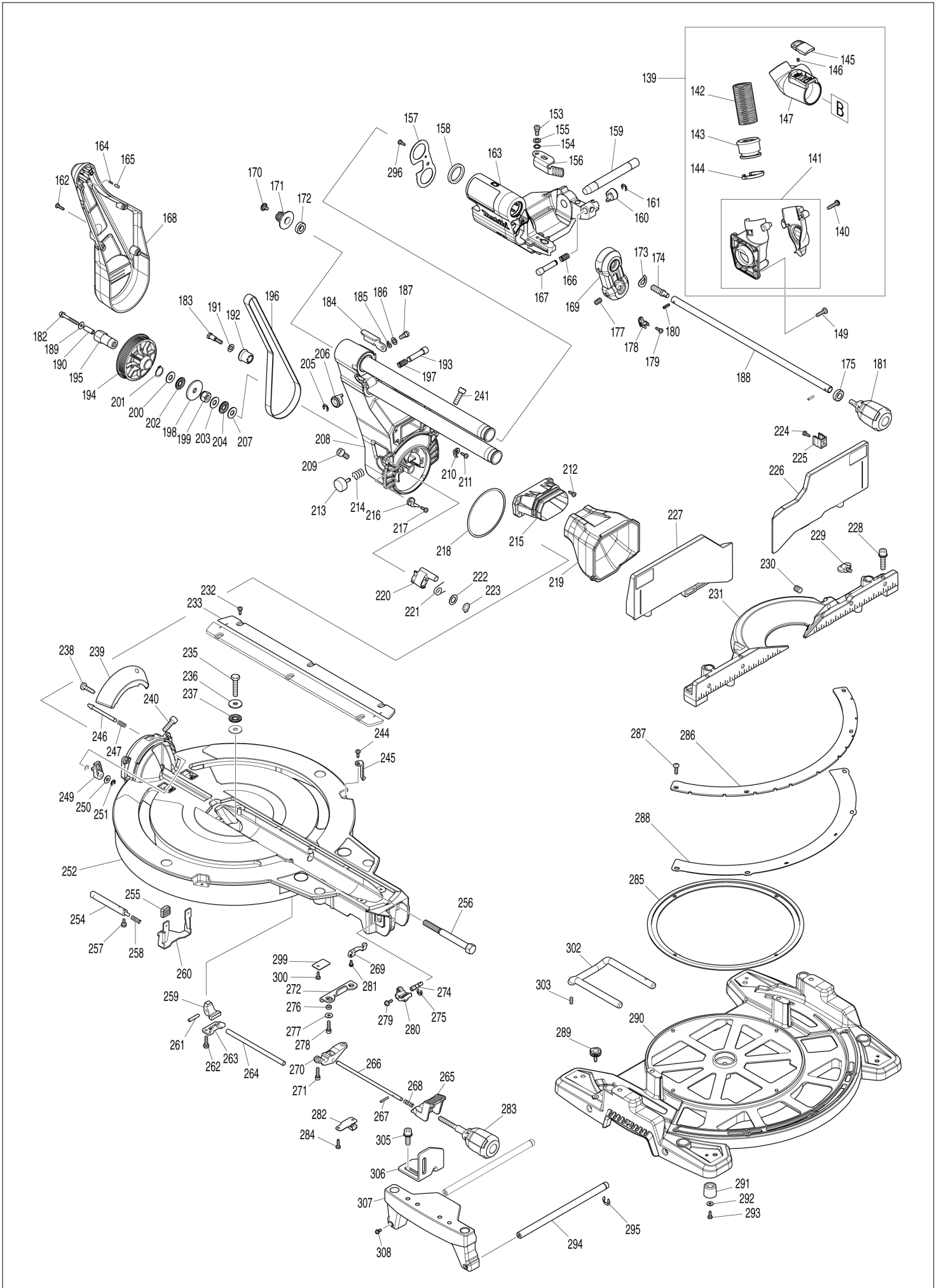
305MM DC SLIDE CPD. MITER SAW



(TH) LS003G / 305MM DC SLIDE CPD. MITER SAW



(TH) LS003G / 305MM DC SLIDE CPD. MITER SAW



TH	THAILAND
----	----------

LS003G / 305MM DC SLIDE CPD. MITER SAW

Item	Sub	Parts No.	Parts Description	Qty	I/C	E/C No.	Close No.	Remark
001		265995-6	TAPPING SCREW 4X18	6				
002		183T58-5	HANDLE HANDLE COVER SET	1				
	C10	810486-8	CAUTION LABEL	1				
	D10		INC. 14					
003		631973-2	SWITCH UNIT	1				
004		8032A7-2	XGT LOGO LABEL	1				
005		140G30-2	CAP COMPLETE	1				
	C10	213218-6	O RING 16	1			DA223	
	C11	213A05-9	O-RING16	1	O	DA223		
	C20	818H48-4	CAP LABEL	1				
006		457935-0	SWITCH LEVER	1				
007		416356-5	LOCK-OFF LEVER	1				
008		651083-9	SWITCH C3XA-1PSPM	1				
009		231026-3	COMPRESSION SPRING 4	1				
011		911123-8	PAN HEAD SCREW M4X14	1				
012		413590-8	SPACER	1				
013		265995-6	TAPPING SCREW 4X18	3				
014		183T58-5	HANDLE HANDLE COVER SET	1				
	C10	810486-8	CAUTION LABEL	1				
	D10		INC. 2					
015		451037-4	SWITCH BUTTON	1				
016		451000-7	LEAD COVER HOLDER	1				
017		265995-6	TAPPING SCREW 4X18	1				
018		265995-6	TAPPING SCREW 4X18	2				
019		457933-4	REAR COVER	1				
020		620E08-4	POWER SUPPLY CIRCUIT	1				
021		620F04-8	CONTROLLER	1				
022		141C22-0	SWITCH PLATE COMPLETE	1				
	C10	8032A8-0	SWITCH LABEL	1				
023		632P65-6	TERMINAL UNIT	1				
024		911948-0	PAN HEAD SCREW M6X80 WITH WR	4				
025		811M04-3	LS003G NAME PLATE	1				
026		457906-7	MOTOR HOUSING	1				
027		265995-6	TAPPING SCREW 4X18	3				
028		911233-1	PAN HEAD SCREW M5X20	2				
029		183T26-8	BATTERY HOUSING SET	1				
	C10	263005-3	RUBBER PIN 6	2				
031		629A76-0	STATOR	1				
032		413E35-6	BAFFLE PLATE	1				
033		265995-6	TAPPING SCREW 4X18	2				
034		211021-9	BALL BEARING 607LLB	1				
035		519554-1	ROTOR ASS'Y	1				
	D10		INC. 34					
036		312B30-4	MOTOR BRACKET	1				
037		961057-5	RETAINING RING S-17	1				
038		210301-0	BALL BEARING 6003DDW	1				
039		922331-6	HEX. SOCKET HEAD BOLT M6X20	1				
040		253804-1	FLAT WASHER 6	1				
041		257461-7	RING 6	1				
042		459250-8	DUST NOZZLE	1				
043		811M10-8	LS003G SERIAL NO. LABEL	1				
045		251554-2	THUMB SCREW M6X40	1				
046		265A36-4	H.S.H.BOLT M6X16	1				
047		458146-0	LOGO PLATE	1				
048		961018-5	STOP RING E-5	1				
049		251547-9	HEX.SOCKET HEAD BOLT M8X25	1				
050		922251-4	HEX. SOCKET HEAD BOLT M5X30	1				
051		266034-5	TAPPING SCREW CT 4X16	3				
052		140J53-8	LINK PLATE COMPLETE	1				
053		257461-7	RING 6	1				
054		253804-1	FLAT WASHER 6	1				
055		262190-9	URETHANE RING 5	1				
056		253428-3	SPRING WASHER 6	1				
057		257449-7	SLEEVE 6	1				
058		266321-2	H.S.SET SCREW(FLAT POINT)M6X16	1				

Interchange
O : Yes
X : No
< : the new part can be substituted for the current.
> : the current part can be substituted for the new.
S : Interchangeable as a set.

TH	THAILAND
----	----------

LS003G / 305MM DC SLIDE CPD. MITER SAW

Item	Sub	Parts No.	Parts Description	Qty	I/C	E/C No.	Close No.	Remark
059		911114-9	PAN HEAD SCREW M4X10	2				
060		232412-1	TORSION SPRING 11	1				
061		457764-1	DUST GUIDE PLATE	1				
062		161647-6	GUARD HOLDER	1				
063		231928-3	RING SPRING 8	1				
064		251544-5	SHOULDER HEX. BOLT M4	1				
065		141C08-4	BLADE CASE COMPLETE	1				
	C10	263005-3	RUBBER PIN 6	3				
066		231240-1	COMPRESSION SPRING 7	1				
067		256633-1	PIN 6	1				
068		458148-6	LEAD COVER	1				
069		265028-7	+ PAN HEAD SCREW M4X11	1				
070		422235-7	GUARD	1				
071		347308-4	GUARD PLATE	1				
072		266283-4	HEX. SOCKET HEX. BOLT M8X20	1				
073		266020-6	TAPPING SCREW 4X12	1				
074		961052-5	RETAINING RING S-12	1				
075		210005-4	BALL BEARING 608DDW	1				
076		261104-5	RUBBER WASHER 12	1				
077		253744-3	FLAT WASHER 12	1				
078		254001-2	WOODRUFF KEY 4	1				
079		227550-2	SPIRAL BEVEL GEAR 32	1				
080		253744-3	FLAT WASHER 12	1				
081		253313-0	THIN WASHER 14	1				
082		451002-3	GREASE HOLDER	1				
083		266026-4	TAPPING SCREW BIND CT 4X12	2				
084		325643-0	GEAR SHAFT	1				
085		216049-2	STEEL BALL 4	1				
086		227702-5	HELICAL GEAR 27	1				
087		227701-7	HELICAL GEAR 14	1				
088		210067-2	BALL BEARING 6000ZZ	1				
089		442147-8	GASKET	1				
090		961055-9	RETAINING RING S-15	1				
091		210005-4	BALL BEARING 608DDW	1				
092		911223-4	PAN HEAD SCREW M5X16	3				
093		227703-3	HELICAL GEAR 28	1				
094		267010-2	FLAT WASHER 5	1				
095		210005-4	BALL BEARING 608DDW	1				
096		158957-0	BEARING BOX COMPLETE	1				
	C10	263002-9	RUBBER PIN 4	1				
097		285847-5	BEARING RETAINER 14-23	1				
098		931202-6	HEX. NUT M5	1				
099		253427-5	SPRING WASHER 5	1				
100		325644-8	SPINDLE	1				
101		211236-8	BALL BEARING 6002DDW	1				
102		285732-2	BEARING RETAINER 51	1				
103		224431-1	INNER FLANGE 53	1				
104		224432-9	OUTER FLANGE 53	1				
105		257060-5	RING 15.8	1				
106		265034-2	+ COUNTERSUNK HEAD SCREW M5X1	2				
107		266755-9	HEX.SOCKET HEAD BOLT M10X20	1				
108		941051-3	FLAT WASHER 4	2				
109		266020-6	TAPPING SCREW 4X12	2				
110		418104-8	LENS	1				
118		620F05-6	LED CIRCUIT	1				
119		266421-8	TAPPING SCREW 3X10	1				
121		266264-8	H.S.SET SCREW(FLAT POINT)M5X6	2				
122		141C21-2	LED COVER COMPLETE	1				
	C10	8024V4-4	CAUTION LABEL	1				
123		266034-5	TAPPING SCREW CT 4X16	2				
127		424193-3	ROLLER	2				
128		266385-6	TAPPING SCREW 4X14	3				
129		413820-7	SAFETY COVER B	1				
130		266385-6	TAPPING SCREW 4X14	1				
131		347213-5	CENTER PLATE	1				

Interchange
O : Yes
X : No
< : the new part can be substituted for the current.
> : the current part can be substituted for the new.
S : Interchangeable as a set.

TH	THAILAND
----	----------

LS003G / 305MM DC SLIDE CPD. MITER SAW

Item	Sub	Parts No.	Parts Description	Qty	I/C	E/C No.	Close No.	Remark
132		231634-0	TORSION SPRING 45	1				
133		424190-9	CUSHION	1				
134		347835-1	CENTER COVER	1				
135		265985-9	HEX.SOCKET HEAD BOLT M6	1				
136		253932-2	WAVE WASHER 10	1				
137		210168-6	BALL BEARING 6805DDW	1				
138		458437-9	SAFETY COVER A	1				
139		127274-9	DUST NOZZLE ASSEMBLY	1				
	D10		INC. 140-147					
140		265995-6	TAPPING SCREW 4X18	3				
141		183H71-1	HOSE CONNECTOR SET	1				
142		245048-7	HOSE 28-0.5	1				
143		457672-6	SLEEVE	1				
144		457673-4	STOPPER	1				
145		458939-5	BUTTON A	1				
146		232485-4	COMPRESSION SPRING 5	1				
147		459249-3	HOSE JOINT	1				
149		266034-5	TAPPING SCREW CT 4X16	3				
150		458149-4	SLEEVE 17	2				
152		233542-1	TORSION SPRING 40	1				
153		251267-5	+ PAN HEAD SCREW M6	1				
154		253948-7	WAVE WASHER 8	1				
155		253835-0	FLAT WASHER 8	1				
156		347221-6	STOPPER ARM	1				
157		347222-4	FRONT ARM PLATE	1				
158		262076-7	FELT RING 30	2				
159		326994-4	ROD 16	1				
160		271437-0	KNOB 22	1				
161		961013-5	STOP RING E-7	1				
162		266034-5	TAPPING SCREW CT 4X16	4				
163		141C14-9	FRONT ARM COMPLETE	1				
	C10							
164		263005-3	RUBBER PIN 6	2				
164		233151-6	COMPRESSION SPRING 4	1				
165		256364-2	PIN 4	1				
166		232384-0	COMPRESSION SPRING 10	1				
167		326977-4	STOPPER PIN	1				
168		458145-2	ARM COVER	1				
169		141C11-5	HOLDER COMPLETE	1				
	C10							
170		812X89-8	INDICATION LABEL	1				
170		265008-3	+ FLAT HEAD SCREW M5	1				
171		222191-9	PULLEY 17-19.3	1				
172		210167-8	BALL BEARING 6900LLB	1				
173		267804-5	WAVE WASHER 15	1				
174		326975-8	SHAFT	1				
175		210167-8	BALL BEARING 6900LLB	1				
177		913416-9	SET SCREW M8X12	2				
178		416536-3	WRENCH HOLDER	1				
179		266026-4	TAPPING SCREW BIND CT 4X12	1				
180		951107-4	SPRING PIN 4-14	2				
181		273016-0	GRIP 50 B	1				
182		266440-4	HEX SOCKET HEAD BOLT M5X40	1				
183		251545-3	SHOULDER HEX. BOLT M6	1				
184		144930-6	STOP LEVER COMPLETE	1				
	C10							
185		812X87-2	INDICATION LABEL	1				
185		253948-7	WAVE WASHER 8	1				
186		253835-0	FLAT WASHER 8	1				
187		251267-5	+ PAN HEAD SCREW M6	1				
188		327054-5	PIN 9-418	1				
189		253194-2	FLAT WASHER 5	1				
190		257436-6	SLEEVE 5	1				
191		253165-9	FLAT WASHER 8	1				
192		457666-1	SLEEVE 20	1				
193		326977-4	STOPPER PIN	1				
194		222192-7	PULLEY 17-87.8	1				
195		327053-7	HEX. NUT M10-19	1				

Interchange
O : Yes
X : No
< : the new part can be substituted for the current.
> : the current part can be substituted for the new.
S : Interchangeable as a set.

TH	THAILAND
----	----------

LS003G / 305MM DC SLIDE CPD. MITER SAW

Item	Sub	Parts No.	Parts Description	Qty	I/C	E/C No.	Close No.	Remark
196		225102-3	SYNCHRO BELT 15-810	1				
197		232384-0	COMPRESSION SPRING 10	1				
198		253388-9	FLAT WASHER 10	1				
199		252244-0	HEX.LOCK NUT M10-17	1				
200		253024-7	FLAT WASHER 10	1				
201		961057-5	RETAINING RING S-17	1				
202		216413-7	THRUST NEEDLE CAGE 1024	1				
203		253024-7	FLAT WASHER 10	1				
204		216413-7	THRUST NEEDLE CAGE 1024	1				
205		961013-5	STOP RING E-7	1				
206		271437-0	KNOB 22	1				
207		253024-7	FLAT WASHER 10	1				
208		141C12-3	ARM COMPLETE	1				
	C10	812X88-0	INDICATION LABEL	1				
209		251547-9	HEX.SOCKET HEAD BOLT M8X25	1				
210		458151-7	INDICATION PLATE R	1				
211		266026-4	TAPPING SCREW BIND CT 4X12	1				
212		266034-5	TAPPING SCREW CT 4X16	4				
213		415208-7	RELEASE BUTTON	1				
214		233031-6	COMPRESSION SPRING 12	1				
215		457654-8	DUST GUIDE HOLDER	1				
216		458150-9	INDICATION PLATE L	1				
217		266026-4	TAPPING SCREW BIND CT 4X12	1				
218		253389-7	WASHER 94	1				
219		422229-2	DUST GUIDE	1				
220		319593-9	STOPPER	1				
221		231646-3	TORSION SPRING 14	1				
222		253744-3	FLAT WASHER 12	1				
223		961052-5	RETAINING RING S-12	1				
224		266026-4	TAPPING SCREW BIND CT 4X12	2				
225		457668-7	HOLDER	2				
226		141C18-1	UPPER FENCE R COMPLETE	1				
	C10	810503-4	CAUTION LABEL	1				
227		141C16-5	UPPER FENCE L COMPLETE	1				
	C10	810503-4	CAUTION LABEL	1				
228		922458-2	H.S.H.BOLT M8X35 WITH WR	4				
229		251887-5	SCREW M6X10	2				
230		251561-5	H.SOCKET HEAD SET SCREW M10X12	2				
231		312B37-0	GUIDE FENCE	1				
232		266026-4	TAPPING SCREW BIND CT 4X12	6				
233		413819-2	KERF BOARD	2				
235		265442-7	HEX. BOLT M8X40	1				
236		253852-0	FLAT WASHER 8	2				
237		216413-7	THRUST NEEDLE CAGE 1024	1				
238		266385-6	TAPPING SCREW 4X14	2				
239		458147-8	BEVEL SCALE PLATE	1				
240		251547-9	HEX.SOCKET HEAD BOLT M8X25	1				
241		251547-9	HEX.SOCKET HEAD BOLT M8X25	1				
244		266026-4	TAPPING SCREW BIND CT 4X12	2				
245		457702-3	INDICATION PLATE	2				
246		326970-8	LOCK PIN 8	1				
247		234122-6	COMPRESSION SPRING 6	1				
249		457657-2	LEVER 25	1				
250		253804-1	FLAT WASHER 6	1				
251		961018-5	STOP RING E-5	2				
252		141E09-4	TURN BASE COMPLETE	1				
	C10	813L22-1	CAUTION LABEL	2				
	C20	812X85-6	CAUTION LABEL	1				
254		326973-2	ROD 12	1				
255		286039-9	CAP	2				
256		326976-6	CENTER SHAFT	1				
257		911113-1	PAN HEAD SCREW M4X10 WITH WR	2				
258		231325-3	COMPRESSION SPRING 6	1				
259		310803-7	TURN STOPPER	1				
260		347217-7	LEVER PLATE	1				

Interchange
O : Yes
X : No
< : the new part can be substituted for the current.
> : the current part can be substituted for the new.
S : Interchangeable as a set.

