

## Accessories

### Adapter set

An attachment installed on the tip of the flexible hose to connect to the grease supply port.

**1 pc**

Part No. 1915L9-8

**3 pcs**

Part No. 1915M0-3



### Angle adapter set

Part No. 1916U8-9

90° grease coupler for hard-to-reach grease nipples



### Lock on adapter set

Part No. 1915N4-2

Locking grease coupler for a more secure connection to the grease nipple of a machine to be lubricated.



### Flexible hose

Grease supply hose

**1200 set**

Length: 1,200 mm

Part No. 1916S5-1



**600 set**

Length: 600 mm

Part No. 1916S7-7



### Extension pipe set

Part No. 1911M9-1

Convenient for connecting to the lubrication points in recessed places.



### Loader fitting set

Part No. 1914G9-7

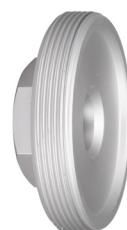
To pump up grease from a pail can for machine lubrication



### Joint set

Part No. 1915E6-5

A joint for connecting a 500 g grease cartridge to the tool.



## Charging Time

	DC40RA	DC40RC
<b>*1 BL4020</b> 2.0Ah	<b>22 min</b>	<b>30 min</b>
<b>*1 BL4025</b> 2.5Ah	<b>28 min</b>	<b>38 min</b>
<b>*1 BL4040/F</b> 4.0Ah	<b>45 min</b>	<b>67 min</b>
<b>BL4050F</b> 5.0Ah	<b>50 min</b>	<b>85 min</b>
<b>BL4080F</b> 8.0Ah	<b>76 min</b>	<b>170 min</b>

\*1 Recommended battery

## Cordless Grease Gun

### GP001G

- Variable Speed
- Brake
- Anti-restart function
- Constant Speed
- Built-in Job Light
- Carrying Case

Grease capacity w/ Barrel A	Cartridge / Bulk: 410 / 455 g (14.5 / 16.0 oz)
Flow rate	Mode 1: 145 mL/min (5.0 oz/min) Mode 2: 220 mL/min (7.5 oz/min) Mode 3: 290 mL/min (10.0 oz/min) Mode 4: 350 mL/min (12.0 oz/min)
Applicable grease (NLGI grade)	No.0 - No.2
Max operating pressure	69 MPa (10,000 psi)
Flexible hose length	1,200 mm (47-1/4")
Vibration level	2.5 m/s <sup>2</sup> or less (EN62841-1)
Uncertainty (K) for Vibration	1.5 m/s <sup>2</sup> (EN62841-1)
Sound pressure level	81 dB (A) (EN62841-1)
Sound power level	89 dB (A) (EN62841-1)
Uncertainty (K) for Noise	3 dB (A) (EN62841-1)
Dimensions (L x W x H) (Battery)	395 x 112 x 245 mm (15-1/2 x 4-3/8 x 9-5/8")
Net weight (Battery)	BL4025
Net weight (Battery)	5.2 - 6.5 kg (11.5 - 14.3 lbs.)
Standard Equipment	BL4020 - BL4080F

Standard Equipment : Shoulder belt, Battery, Charger

The weight may differ depending on the attachment(s), including the battery cartridge. The lightest and heaviest combination are shown in the table.  
Items of standard equipment and specifications may vary by country or area.

**Makita Corporation**

3-11-8 Sumiyoshi-cho, Anjo, Aichi, 446-8502 Japan

PRINTED IN JAPAN 202509



www.makita.com

**Makita**

**Cordless Grease Gun**  
**GP001G**

Satisfy Professional's Needs

**XGT**

**XGT**  
**40V<sup>Li-ion</sup>max**

**Stable discharge even**  
**under high-pressure**  
**operation**

**Track tensioning operation for heavy machinery**

Max flow rate

**350 mL/min**

Max operating pressure

**69 MPa**



**BL MOTOR XPT**





**Delivers stable high-speed discharge under high pressure**



Work efficiency increased by about

**175%**

At high-pressure (40 MPa)  
\* Compared to our 18V model

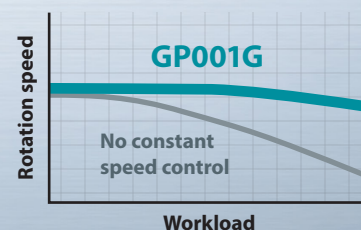
Flow rate at high-pressure (40 MPa)  
Grease used: Makita grease N No. 2

GP001G 290mL/min **275**

Our 18V model **100**

Low Flow rate High

Constant speed control ensures stable discharge.



## Fixed-quantity discharge mode

Ensures precise greasing at multiple points

**Stops automatically after the preset number of strokes.**

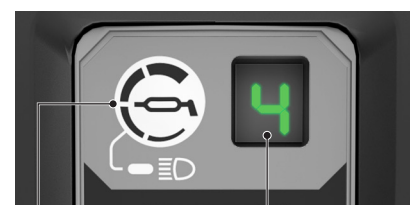
Quick, precise multi-point greasing with no need to check grease volume.



**For greasing agricultural machinery and heavy equipment**



Discharge speed selection [4 stages]



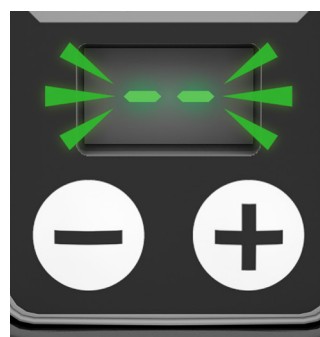
Discharge speed display

Speed mode changing / Light button

Flow rate [mL/min]

Mode 1	Mode 2	Mode 3	Mode 4
145	220	290	350

Air lock detection function



Blinks when no grease is discharged after switch operation

Easier bellows cartridge replacement



Redesigned lower housing and wider opening for easier bellows cartridge changes.

Reduced air lock frequency



Shorter grease path reduces air lock during cartridge replacement.

Variable speed trigger  
Discharge volume can be adjusted by trigger pull.

Lock button  
Makes continuous greasing easier by locking the trigger.

Twin LED job light



Flexible hose  
For easy operation in tight spaces



Shoulder strap compatible  
(Standard equipment)



Bulk grease is directly loadable into the barrel.

Trigger lock button  
Prevents accidental trigger operation.

**XPT**

Enhanced dust and water resistance in harsh outdoor environments



Compatible with various grease cartridges

Both narrow and wide barrels are available to suit grease cartridges used in different regions.