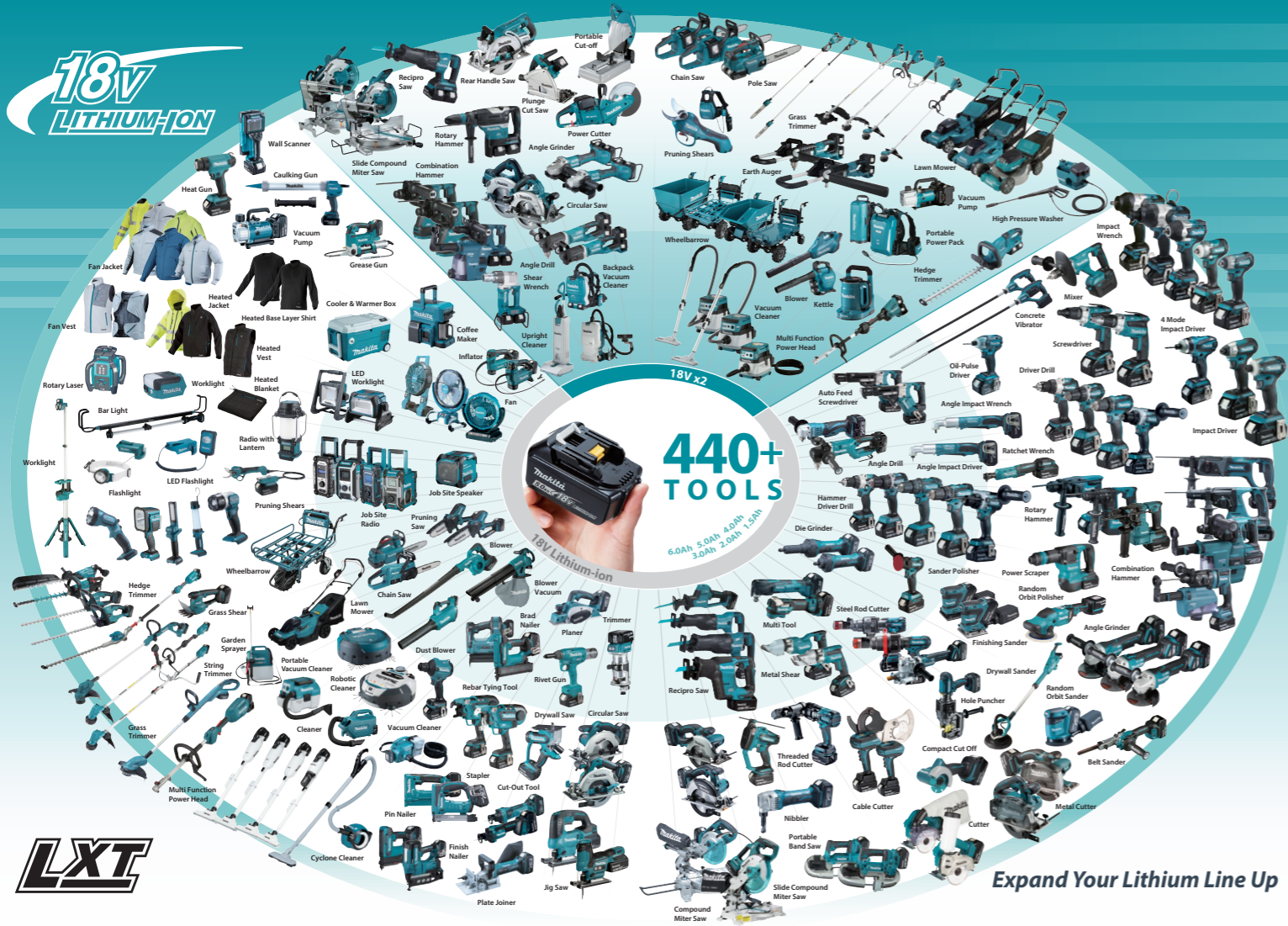


**18V LITHIUM-ION**



**LXT**

Satisfy Professional's Needs

**LXT**

**Makita**

**Cordless Impact Driver  
DTD173**

**18V LITHIUM-ION**



**Slim & high power**

**111** Head length  
**mm**

**180** Max fastening torque  
**N·m**

**Easy to use rear Switch panel**

**Accessories**

- Tool catcher**  
Part No. 197043-2
- Battery protector**  
Part No. 194649-7
- Hook**  
Part No. 195779-7  
For BL1815N, BL1820B
- Drill chuck**  
Part No. 192173-4  
Type: 48-NZ
- Battery adapter BAP18**  
This adapter can only be supplied to countries where UL or EMC standards are not applied.

**Charging Time**

	Fast Charging	
	DC18RC	DC18SD
<b>BL1815N</b> 1.5Ah	<b>15 min</b>	<b>30 min</b>
<b>BL1820B</b> 2.0Ah	<b>24 min</b>	<b>45 min</b>
<b>BL1830B</b> 3.0Ah	<b>22 min</b>	<b>60 min</b>
<b>BL1840B</b> 4.0Ah	<b>36 min</b>	<b>90 min</b>
<b>BL1850B</b> 5.0Ah	<b>45 min</b>	<b>110 min</b>
<b>BL1860B</b> 6.0Ah	<b>55 min</b>	<b>130 min</b>

**Cordless Impact Driver**

<b>DTD173</b>	
Variable Speed	Impact power selection 4 stages + 2 T-modes + Wood mode + Bolt mode
Brake	Capacity Machine screw: M4 - M8 (5/32 - 5/16") Standard bolt: M5 - M16 (3/16 - 5/8") High strength bolt: M5 - M14 (3/16 - 9/16")
Reversing	Max fastening torque 180 N·m (1,590 in.lbs.)
Electronic 4-Speed	Fastening torque Hard / Med. / Soft: 170 / 50 / 20 N·m (1,510 / 440 / 180 in.lbs.)
Built-in Job Light	No load speed Max / Hard / Med. / Soft: 0 - 3,600 / 0 - 3,200 / 0 - 2,100 / 0 - 1,100 min <sup>-1</sup>
Carrying Case	Impacts per minute Max / Hard / Med. / Soft: 0 - 3,800 / 0 - 3,600 / 0 - 2,600 / 0 - 1,100 min <sup>-1</sup>
<b>Standard Equipment:</b> Hook, Hand strap, Phillips bit, Battery, Charger	Vibration level (EN62841-2-2) Impact tightening of fasteners of the maximum capacity of the tool: 12.9 m/s <sup>2</sup>
	Vibration K factor (EN62841-2-2) Impact tightening of fasteners of the maximum capacity of the tool: 1.5 m/s <sup>2</sup>
	Sound pressure level (EN62841-2-2) 100 dB(A)
	Sound power level (EN62841-2-2) 108 dB(A)
	Noise K factor (EN62841-2-2) 3 dB(A)
	Dimensions (L x W x H) 111 x 81 x 234 mm (4-3/8 x 3-3/16 x 9-1/4")
	Dimensions (Battery) BL1860B
	Net weight 1.5 kg (3.3 lbs.)
	Net weight (Battery) BL1860B

The weight may differ depending on the attachment(s), including the battery cartridge.  
Items of standard equipment and specifications may vary by country or area.

**Makita Corporation**

3-11-8 Sumiyoshi-cho, Anjo, Aichi, 446-8502 Japan



PRINTED IN JAPAN 202408 www.makita.com

**Work amount**  
**400 pcs.**  
Battery: BL1860B  
on a full battery charge

Drove 120mm coarse thread screws.

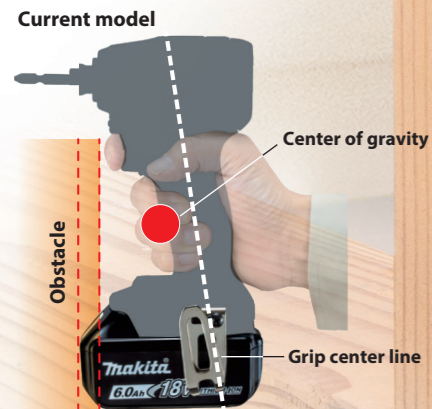
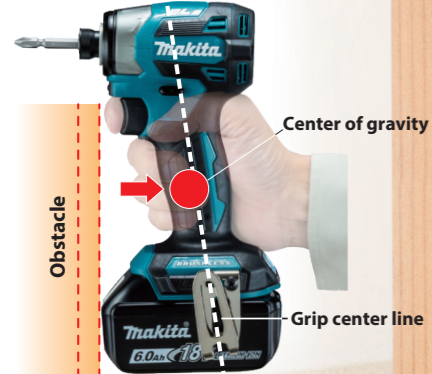
**BL MOTOR XPT**



## Optimal battery layout

The center of gravity has been moved closer to the center line of the grip, by locating the battery 12mm backward compared with the current model, reducing the strain on the wrist during operation.

DTD173



## Easy-to-see Switch panel

The switch panel has been moved to the rear side of the battery, allowing the user to check and change the mode during operation.



## Anti-bit wobbling structure

Two ball bearings are used to securely hold the anvil for reduced bit wobbling.

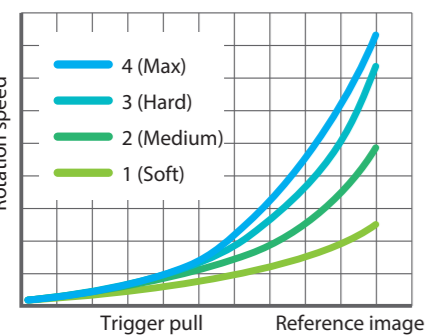
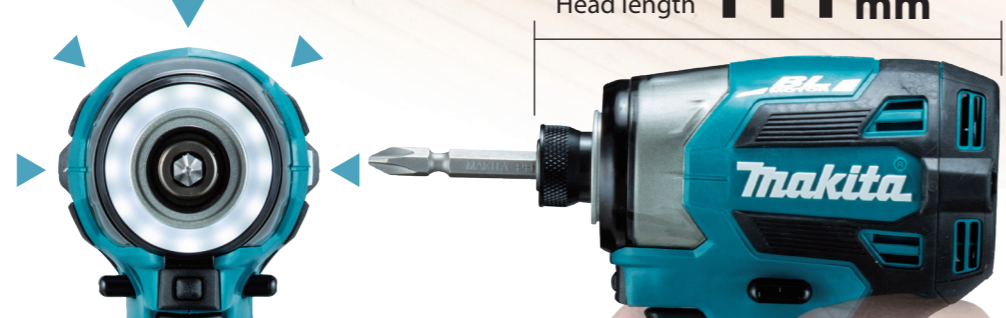
## NEW trigger switch

Intuitive trigger speed change operation is possible from low to high speeds.



## Slim tool body

improving the screwdriving performance in tight corners or confined spaces.



## Ring illumination LED

The brightness (3 stages) can be changed.



Significantly reducing the shadow of the bit.



Can be used as a working light.



## Assists in a variety of tightening work

**4-speed power selection**

**4-assist modes**

**Wood** Tightening long screws.

No load speed / Impacts per min.  
0 - 1,800 / 0 - 3,800



The tool drives a screw with low-speed rotation at first. After starting to impact, the rotation speed increases and reaches max speed.

**Bolt** Loosening bolts.

No load speed / Impacts per min.  
0 - 3,600 / 0 - 3,800



This mode helps to prevent a bolt from falling off.

## Quick mode-switching button

The level of impact force changes every time you press the quick mode-switching button while holding the grip.



## Memory function of application mode

If one of the application modes is registered in advance, you can switch between the current mode and the registered mode by simply pressing the quick mode-switching button.



**T1** Teks screw thin metal  
Driving self-drilling screws to a thin metal like a metal stud.

No load speed / Impacts per min.  
0 - 2,900 / -



The tool stops rotating soon after impact starts.

**T2** Teks screw thick metal  
Driving self-drilling screws to a thick metal plate with good finish.

No load speed / Impacts per min.  
0 - 3,600 / 0 - 2,600



This mode helps to prevent the screws from breakage and stripping.